

**ENCORE**<sup>TM</sup>  
**PACKAGING, LLC**

*innovation in  
packaging tools &  
equipment*

# PRODUCT CATALOG

**VOLUME 24 - VERSION A**

# STEEL TENSIONERS



## EP-1400

*Compact Feedwheel Tensioner*



Strap Range: 3/8-3/4"

Strap Gauges: .018-.023

Flat loads

Unlimited take-up



## EP-1410

*Economy Feedwheel Tensioner*



Strap Range: 3/8-3/4"

Strap Gauges: .018-.023

Flat loads

Unlimited take-up



## EP-1425

*SD Feedwheel Tensioner*



Strap Range: 3/8-3/4"

Strap Gauges: .018-.025

Flat loads

Unlimited take-up



## EP-1450

*HD Feedwheel Tensioner*



Strap Range: 3/4-1 1/4"

Strap Gauges: .025-.044

Flat loads

Unlimited take-up



## EP-1500

*Economy Windlass Tensioner*



Strap Range: 3/4-1 1/4"

Strap Gauges: .023-.031

Flat loads

Limited take-up



## EP-1525

*Premium Windlass Tensioner*



Strap Range: 3/4-1 1/4"

Strap Gauges: .028-.044

Flat loads

Limited take-up



## EP-1550

*Premium Windlass Tensioner with Cutter*



Strap Range: 3/4-1 1/4"

Strap Gauges: .028-.044

Flat loads

Limited take-up



## EP-1610

*HD Compact Pusher Tensioner*



Strap Range: 3/8-3/4"

Strap Gauges: .020-.031

Round or irregular loads

Unlimited take-up



## EP-1620

*HD Feedwheel Pusher Tensioner*



Strap Range: 5/8-1 1/4"

Strap Gauges: .023-.044

Round or irregular loads

Unlimited take-up



## EP-1625

*Light Duty Pusher Tensioner*



Strap Range: 3/8-3/4"

Strap Gauges: .015-.023

Round or irregular loads

Limited take-up



## EP-1650

*HD Pusher Rack Tensioner*



Strap Range: 5/8-1 1/4"

Strap Gauges: .023-.044

Round or irregular loads

Limited take-up



## EP-1680

*Pneumatic Pusher Tensioner*



Strap Range: 3/4-1 1/4"

Strap Gauges: .031-.047

Air Pressure: 70-90 lbs

Tension Speed: 3.35"/sec

Tension Force: 1,910 lbs



## RSA-590

*Stainless Steel Bander*



Strap Range: 1/4"

Strap Gauge: .016

Use stainless steel strap

Round Loads

Tensions, seals, & cuts

8 tension settings

# STEEL SEALERS & CUTTERS



**EP-1800**   
SD Double-Notch Front Action Sealer

Size Options:  
3/8", 1/2", 5/8", 3/4"

Strap Gauges: .015-.025

Use open seals

Double-notch, down cut



**EP-1810**  
Economy Front Action Sealer

Size Options: 1/2", 5/8", 3/4"

Strap Gauges: .015-.023

Use open seals

Double-notch, down cut



**EP-1820**   
SD Single-Notch Front Action Sealer

Size Options:  
3/8", 1/2", 5/8", 3/4"

Strap Gauges: .015-.025

Use closed seals

Single-notch, up cut



**EP-1850**   
HD Front Action Sealer

Size Options: 1/2", 5/8", 3/4"

Strap Gauges: .023-.031

Use open seals

Double-notch, down cut



**EP-1870**   
HD Double-Notch Side Action Sealer

Size Options: 3/4"

Strap Gauges: .020-.035

Use open or closed seals

Double-notch, down cut

(24" handles available by request)



**EP-1880**   
HD Single-Notch Side Action Sealer

Size Options: 3/4", 1", 1 1/4"

Strap Gauges: .025-.044

Use closed seals

Single-notch, down cut



**EP-1900**   
HD Double-Notch Side Action Sealer

Size Options: 3/4", 1", 1 1/4"

Strap Gauges: .025-.044

Use HD open or closed seals

Double-notch, up cut



**EP-1980**  
Pneumatic Sealer

Size Options: 3/4", 1 1/4"

Strap Gauges: .031-.047

Air Pressure: 70 - 90 PSI

Use closed seals

Single-notch



**EP-2000**  
HD Sealless Tool

Size Options: 1/2", 5/8", 3/4"

Strap Gauges: .018-.025 HT

Tensions, seals, & cuts



**EP-2010**  
SD Sealless Tool

Size Options: 1/2", 5/8", 3/4"

Strap Gauges: .015-.023 RD

Tensions, seals, & cuts



**EP-2400**  
Economy Strap Shears

Strap Range: 3/8-3/4"

Strap Gauges: up to .028

Single-hand operated



**EP-2450**  
Premium Strap Shears

Strap Range: 3/8-1 1/4"

Strap Gauges: up to .031

Single-hand operated



**EP-2475**  
Medium Range Strap Shears

Strap Range: 3/4-1 1/4"

Strap Gauges: up to .044

Two-hand operated



**EP-2500**   
HD Strap Shears

Strap Range: 3/4-2"

Strap Gauges: up to .050

Two-hand operated

# POLY & CORD TENSIONERS



## EP-1100

*SD Windlass Tensioner*

Polypropylene strapping

Strap Range: 1/2-3/4"

Flat loads



## EP-1120

*SD Poly Tensioner*

Polyester & Polypropylene strapping

Strap Range: 1/2-3/4"

Flat loads



## EP-1140

*Cord Strap Bar*

Manual pull for Cord strapping

3/4" solid steel round stock

Use wire buckles



## EP-1150

*Premium Windlass Tensioner*

Polyester & Polypropylene strapping

Strap Range: 1/2-3/4"

Flat loads



## EP-1160

*Premium Windlass Cord Tensioner*

Cord strapping

Strap Range: 1/2-3/4"

Use wire buckles

Flat loads



## EP-1175

*Premium Windlass Cord Pusher Tensioner*

Cord strapping

Strap Range: 1/2-3/4"

Use wire buckles

Round or irregular loads



## EP-1185

*Premium Poly Pusher Tensioner*

Polyester & Polypropylene strapping

Strap Range: 1/2-3/4"

Use serrated pusher seals

Round or irregular loads



## EP-1188

*Economy Large Cord Tensioner*

Cord strapping

Strap Range: 5/8-1 1/2"

Use wire buckles

Flat loads



## EP-1190

*HD Jumbo Cord Tensioner*

Cord strapping

Strap Range: 5/8-1 1/2"

Use wire buckles

Flat loads



## EP-1195

*HD Jumbo Poly Tensioner*

Polyester, Polypropylene & Composite strapping

Strap Range: 5/8-1 1/2"

Flat loads



## EP-1197

*Premium Cord Windlass Tensioner with Cutter*

Cord strapping

Strap Range: 3/4-1 1/4"

Flat loads



## EP-1340

*Poly Buckle Tensioner*

Polypropylene strapping

Strap Range: 1/2-3/4"

Use wire buckles

# POLY SEALERS



## EP-1200

*Economy Front Action Sealer*

Polypropylene strapping

Size Options: 1/2", 5/8", 3/4"

Use snap-on open seals



## EP-1225

*Premium Front Action Sealer*

Polypropylene strapping

Size Options: 1/2", 5/8", 3/4"

Use snap-on open seals



## EP-1235

*Bidirectional Front Action Sealer*

Polyester strapping

Size Options: 1/2", 5/8", 3/4"

Use serrated seals

17" handles on 1/2" & 5/8"

25" handles on 3/4"



## EP-1237

*HD Bidirectional Front Action Sealer*

Polyester strapping

Size Options: 1/2", 5/8", 3/4"

Use serrated seals

17" handles on 1/2" & 5/8"

25" handles on 3/4"



## EP-1245

*Symmetrical Sealer*

Polyester strapping

Size Options: 5/8", 3/4"

Use symmetrical seals

Front action, bidirectional

17" handles



## EP-1250

*Unidirectional Premium Front Action Sealer*

Polyester strapping

Size Options: 1/2", 5/8", 3/4"

Use serrated seals

17" handles on 1/2" & 5/8"

25" handles on 3/4"

Blue: long jaw | Orange: short jaw



## EP-1255

*Economy Polyester Sealer*

Polyester strapping

Size Options: 5/8"

Use serrated seals

17" handles



## EP-1275

*HD Premium Front Action Micro-Grit Sealer*

Polyester & Polypropylene strapping

Size Options: 1/2", 5/8"

Use micro-grit seals



## EP-1285

*Serrated Pusher Sealer*

Polyester & Polypropylene strapping

Size Options: 1/2", 5/8", 3/4"

Use serrated pusher seals



## EP-1295

*HD Side Action Micro-Grit Sealer*

Polyester strapping

Size Options: 5/8", 3/4"

Use micro-grit seals

# BATTERY STRAPPING TOOLS



## EP-1320

Flat Lacing Rod



56" overall length

Easy clip technology

Helps feed strap under pallets



BACK



FRONT

## E1260-28-D

18v Li-Ion Battery

18 Volts, 4/5 AMP

Charge indicator light

Compatible with all Encore units



BACK



FRONT

## E1260-28-HD

HD 18v Li-Ion Battery

18 Volts, 4/5 AMP

Charge indicator light

Compatible with most Encore units, except the EP-1345 and EP-1355.



## E1260-58

Battery Charger

Charges both Encore batteries

Regional electrical plugs available by request



## EP-1260

Friction Welder - Polypropylene

BATTERY TOOL



Polypropylene strapping

Strap Range: 1/2-3/4"

Flat loads

5 time settings

\*Battery & charger sold separately



## EP-1265

Friction Welder - Polyester

BATTERY TOOL



Polyester strapping

Strap Range: 1/2-3/4"

Flat loads

5 time settings

\*Battery & charger sold separately



## EP-1270

Friction Welder - Polyester or Polypropylene

BATTERY TOOL



Polyester or Polypropylene strapping

Strap Range: 1/2-1 1/4"

Flat loads

5 time settings

\*Battery & charger sold separately



## EP-1345

Battery Powered Cord Strap Tensioner with Cutter

BATTERY TOOL

Composite & Woven Cord strapping

Strap Range: up to 1 1/2"

Strap Width: 3/4" - 1 1/4"

Strap Thickness: .033" - .065"

Tension Range: 661 - 1763 lbs

Includes: 1 charger & 2 batteries

3 pre-programmed tension modes

Tensions with 6 tension force levels

Includes removable cutter housing

Touch screen

Flat loads



## EP-1355

HD Battery Tool

BATTERY TOOL

Polyester Strapping

Strap Width: 1/2 - 5/8"

Strap Thickness: up to 0.65 - 1.27"

Break Strength: up to 425 lbs

Tension Range: 55 - 551 lbs

Includes: 1 charger & 2 batteries

Polypropylene Strapping

Strap Width: 5/8 - 3/4"

Strap Thickness: up to 0.04 - 1.27"

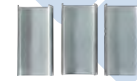
Break Strength: up to 925 lbs

Tension Range: 88 - 881 lbs

# SEALS & BUCKLES

## STEEL

PART #		DESCRIPTION	WEIGHT (PER CASE)	QTY
S38S02	3/8"	Snap-on/Open	12.5 lbs	2500
S12S02	1/2"	Snap-on/Open	15 lbs	2500
S58S02	5/8"	Snap-on/Open	17.5 lbs	2500
S34S02	3/4"	Snap-on/Open	20 lbs	2500
S34S03	3/4"	HD Snap-on/Open	26 lbs	1000
S114S03	1 1/4"	HD Snap-on/Open	53 lbs	1000
S38P02	3/8"	Push-on/Close	17.5 lbs	2500
S12P02	1/2"	Push-on/Close	20 lbs	2500
S58P02	5/8"	Push-on/Close	25 lbs	2500
S34P02	3/4"	Push-on/Close	35 lbs	2500
S34P03	3/4"	HD Push-on/Close	38 lbs	1000
S114P03	1 1/4"	HD Push-on/Close	71 lbs	1000



S12S02



S34S03



S58P02



S114P03

## POLY

PART #		DESCRIPTION	WEIGHT (PER CASE)	QTY
P12S02	1/2"	Snap-on	12 lbs	1000
P58S02	5/8"	Snap-on	15 lbs	1000
P34S02	3/4"	Snap-on	18 lbs	1000
P12SS3	1/2"	Snap-on, serrated	13 lbs	1000
P58SS3	5/8"	Snap-on, serrated	20 lbs	1000
P34SS3	3/4"	Snap-on, serrated	22 lbs	1000
P12P03	1/2"	Push-on, serrated	9 lbs	1000
P58P03	5/8"	Push-on, serrated	13 lbs	1000
P34P03	3/4"	Push-on, serrated	15 lbs	1000
P12PS3	1/2"	HD Micro-Grit	22 lbs	1000
P58PS4	5/8"	HD Micro-Grit	28 lbs	1000
P34PS4	3/4"	HD Micro-Grit	31 lbs	1000
P58SY4	5/8"	Symmetrical	46 lbs	1000
P34SY4	3/4"	Symmetrical	51 lbs	1000
P34SY6	3/4"	HD Double Seal Clips	47 lbs	500



P12S02



P12SS3



P58PS4



P34SY4

## BUCKLES

PART #		DESCRIPTION	GAUGE	QTY
P12WB2-GA	1/2"	Galvanized/Clear Wire	.108"	1000
P12WB3-GA	1/2"	HD Galvanized/Clear Wire	.118"	1000
P58WB3-GA	5/8"	HD Galvanized/Clear Wire	.138"	1000
P34WB3-GA	3/4"	HD Galvanized/Clear Wire	.157"	1000
P100WB3-GA	1"	HD Galvanized/Clear Wire	.197"	500
P114WB3-GA	1 1/4"	HD Galvanized/Clear Wire	.276"	250
P12PB2	1/2"	Plastic	STD	1000
P12WB2-PH	1/2"	Phosphate Wire	.108"	1000
P12WB3-PH	1/2"	HD Phosphate Wire	.118"	1000
P58WB3-PH	5/8"	HD Phosphate Wire	.138"	1000
P34WB3-PH	3/4"	HD Phosphate Wire	.157"	1000
P100WB3-PH	1"	HD Phosphate Wire	.197"	500
P114WB3-PH	1 1/4"	HD Phosphate Wire	.276"	250



P58WB3-GA



P100WB3-GA

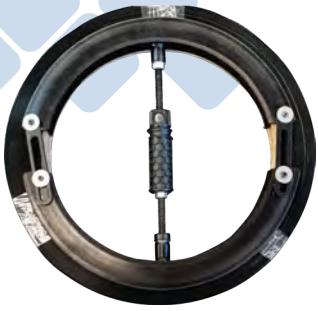


P12WB2-PH



P34WB3-PH

# STEEL & POLY DISPENSERS



## EP-3003

*Core Corrector*



- Reset 16" damaged core
- Easy release and load system
- Solid steel construction
- Lightweight, portable unit



## EP-3005

*Strap Caddy*



- Use Steel strapping mini coils
- Lightweight portable unit
- Tools & coil sold separately



## EP-3006

*Strap Caddy Standard*



- Use Steel strapping mini coils
- Long handles for less strain
- Large storage bins



## EP-3007

*Strap Caddy Premium*



- Use Steel strapping mini coils
- Heavy duty convenient unit
- Lockable coil container



## EP-3050 (oscillated)

*Horizontal Wall/Forklift Mountable Strapping Dispenser*



- Oscillated wound
- Core ID: 16"
- Face Width: 3-6" (8" available by request)



## EP-3050 (ribbon)

*Horizontal Wall/Forklift Mountable Strapping Dispenser*



- Ribbon wound
- Strap Range: 3/4-1 1/4"
- Core ID: 16"



## EP-3065-PS

*HD Cobra Strapping Dispenser for Poly*



- For Poly Strapping
- Oscillated wound
- Strap Range: 3/4-1 1/4"



## EP-3065-SS

*HD Cobra Strapping Dispenser for Steel*



- For Steel Strapping
- Ribbon wound
- Strap Range: 3/4-1 1/4"



## EP-3075

*Floor Mount with Cutter*



- Ribbon or oscillated wound
- Holds: two steel ribbon coils or one oscillated roll (steel or poly)
- Foot-activated cutter blade
- (Forklift support part available & sold separately)



## EP-3078

*Forklift Mount with Cutter*



- Ribbon or oscillated wound
- Holds: two steel ribbon coils or one oscillated roll (steel or poly)
- Manual push cutter
- Includes handy, magnetic toolbox attachment



## EP-3042

*Multi-Coil Strapping Dispenser*



- Ribbon wound
- Can hold multiple coils (up to 3 at once)
- Core ID: 16"
- 10" rubber tires





### EP-3080

Standard Strapping Dispenser



Oscillated wound

For Poly strapping

Strap Width: up to 3/4"

Core ID: 16" (8" available by request)

Face Width: 3-8"

Quick load system

10" rubber tires



### EP-3100

Premium Strapping Dispenser



Oscillated wound

For Steel or Poly strapping

Strap Width: up to 5/8"

Core ID: 16"

Face Width: 3-6"

10" rubber tires



### EP-3200

Premium Strapping Dispenser with Strap Troller



Oscillated wound

Order for Steel or Poly strapping

Strap Width: up to 1"

Core ID: 16"

Face Width: 3-6"

10" rubber tires  
(Pneumatic tires available by request)



### EP-3200-HD

HD Premium Strapping Dispenser



Oscillated wound

Order for Steel or Poly strapping

Strap Width: up to 1"

Core ID: 16"  
(back supports 28" disk)

10" rubber tires  
(Pneumatic tires available by request)



### EP-3340

Ribbon-Wound Strapping Dispenser



Ribbon wound

Order for Steel or Poly strapping

Strap Range: up to 1 1/4"

Core ID: 16"

Quick load system

10" rubber tires  
(Pneumatic tires available by request)



### EP-3350

HD Ribbon-Wound Strapping Dispenser



Ribbon wound

Order for Steel or Poly strapping

Strap Range: up to 2"

Core ID: 16"

10" rubber tires  
(Pneumatic tires available by request)



### EP-3400 SS/PS

Monster Cart



Ribbon wound

Order for Steel or Poly strapping

Strap Range: up to 2"

16" pneumatic tires

Two storage trays



### EP-3450 SS/PS

Automatic Strap  
Cutter



**BATTERY TOOL**

EP-3450-SS for Steel

EP-3450-PS for Poly, Cord

Oscillated & Ribbon Wound

Strap Width: up to 1 1/4"

Strap Gauge: up to .044"

Core ID: 16"

Fastest Speed: 39 in/s (1m/s)

Includes: 1 charger & 2 batteries

# MOBILE STRAPPING TRUCKS

## EP-3000

Tool Balancer

- EP-3000-TB-2 (4-7 lbs / 2-3 kg)
- EP-3000-TB-3 (7-11 lbs / 3-5 kg)
- EP-3000-TB-4 (11-15 lbs / 5-7 kg)
- EP-3000-TB-5 (15-20 lbs / 7-9 kg)
- EP-3000-TB-6 (33-49 lbs / 15-22 kg)

Tool spring

External tension adjustment

Knob dispenses easily & rapidly

(Hanger sold separately)



## EP-3500 (oscillated)

## EP-3505 (ribbon)

Mobile Strapping Truck  
(standard version)



Steel & Poly Strapping

Core ID: 16"

HD steel frame

Height adjustable (handle & tray)

Locking swivel casters

(Tool balancer, mast, hanger, & two floor trays sold separately)



## EP-3520 (oscillated)

## EP-3525 (ribbon)

Strap Truck - Belly Bander  
(horizontal version)



Steel & Poly Strapping

Core ID: 16"

HD steel frame

Height adjustable (handle & tray)

Locking swivel casters

(Tool balancer, mast, & hanger sold separately)



## EP-3550 (oscillated)

## EP-3555 (ribbon)

Tool Balancer Cart  
(standard version with tool mast)



Steel & Poly Strapping

Core ID: 16"

HD steel frame

Height adjustable (handle & tray)

Locking swivel casters

(Tool balancer & hanger sold separately)



## EP-3560

Lifter Device

(standard version with tool mast)



Oscillated & Ribbon Wound

Can hold 2 ribbon rolls or 1 oscillated roll at one time

Steel & Poly Strapping

Core ID: 16"

Battery operated lifter device

HD steel frame

Height adjustable (handle & tray)

Locking swivel casters

Includes: 1 charger & 2 batteries

(Tool balancer & hanger sold separately)



## EP-3570 (oscillated)

## EP-3575 (ribbon)

Belly Bander  
(horizontal version with tool mast)



Steel & Poly Strapping

Core ID: 16"

HD steel frame

Height adjustable (handle & tray)

Locking swivel casters

(Tool balancer & hanger sold separately)



# CORD DISPENSERS

specify Core ID when ordering



## EP-3008

Cord Cradle

Disk Insert Options for Core ID:  
1", 3", 6", 8"

Disk Size: 18"

Quick load system

Tray optional



## EP-3015

Lightweight Poly/Cord Strapping Dispenser

Polypropylene & Cord strapping

Disk Insert Options for Core ID:  
1 1/2", 3", 6", 8", 16"

Disk Size: 25"

6" rubber tires



## EP-3020

Stationary Cord Strapping Dispenser

Face Width: up to 8"

Table, floor, & wall mountable



## EP-3025

Mobile Floor Cord Strapping Dispenser

Face Width: up to 8"

Table, floor, & wall mountable



## EP-3025-NZ

Mobile Floor Cord Strapping Dispenser (NZ Version)

Disk Insert Options for Core ID: 1 1/2", 3", 6", 8"

Disk Size: 18"

Face Width: up to 8"

Table, floor, & wall mountable  
(Includes spin nut & flanges)



## EP-3030 (ribbon)

Cord Wall Mount Unit

Disk Insert Options for Core ID: 1 1/2", 3", 6", 8"

Disk Size: 25"

Quick load system

(Tray attachment kit sold separately)



## EP-3032

Cord Forklift Mount Dispenser

Disk Insert Options for Core ID: 1 1/2", 3", 6", 8"

Disk Size: 18"

Quick load system



## EP-3035 (oscillated)

Cord Wall Mount Unit

Disk Insert Options for Core ID: 1 1/2", 3", 6", 8"

Disk Size: 18"

(Tray attachment kit sold separately)



## EP-3040 (ribbon)

Cord Strapping Dispenser

Disk Insert Options for Core ID: 1 1/2", 3", 6", 8", 16"  
(1" available by request)

Disk Size: 25"

10" tires



## EP-3045 (oscillated)

Cord Strapping Dispenser

Disk Insert Options for Core ID: 1 1/2", 3", 6", 8"  
(1" available by request)

Disk Size: 18"

10" tires



# STRAPPING KITS

## Steel

Open Seals & Closed Seals & Contractor

PART #	TYPE	CONTENTS
S12K01	1/2" Strapping, Open Seals	EP-3100, EP-1810-12, EP-1410, EP-2400, S12SO2 (1 case)
S34K01	3/4" Strapping, Open Seals	EP-3100, EP-1810-34, EP-1410, EP-2400, S34SO2 (1 case)
S12K02	1/2" Strapping, Open Seals	EP-3100, EP-1800-12, EP-1425, EP-2450, S12SO2 (1 case)
S58K02	5/8" Strapping, Open Seals	EP-3100, EP-1800-58, EP-1425, EP-2450, S58SO2 (1 case)
S34K02	3/4" Strapping, Open Seals	EP-3100, EP-1800-34, EP-1425, EP-2450, S34SO2 (1 case)
S12KP2	1/2" Strapping, Closed Seals	EP-3100, EP-1820-12, EP-1610, EP-2450, S12PO2 (1 case)
S58KP2	5/8" Strapping, Closed Seals	EP-3100, EP-1820-58, EP-1610, EP-2450, S58PO2 (1 case)
S34KP2	3/4" Strapping, Closed Seals	EP-3100, EP-1820-34, EP-1610, EP-2450, S34PO2 (1 case)
SS12KOA	1/2" Strapping, Contractor	EP-3006, SMC12020-300, EP-1410, EP-1810-12, and S12SO2 (250 pack)
SS34KOA	3/4" Strapping, Contractor	EP-3006, SMC34020-300, EP-1410, EP-1810-34, and S34SO2 (250 pack)



**S12K01**  
1/2" Strapping,  
Open Seals



**SS12KOA**  
1/2" Strapping,  
Contractor

## Polyester

Economy & HD

PART #	TYPE	CONTENTS
PT12K02	1/2" Strapping, Economy	EP-3100, EP-1250-12, EP-1120, P12SS3 (1 case)
PT58K02	5/8" Strapping, Economy	EP-3100, EP-1255-58, EP-1120, P58SS3 (1 case)
PT34K02	3/4" Strapping, Economy	EP-3100, EP-1250-34, EP-1120, P34SS3 (1 case)
PT12K03	1/2" Strapping, HD	EP-3100, EP-1250-12, EP-1150, P12SS3 (1 case)
PT58K03	5/8" Strapping, HD	EP-3100, EP-1250-58, EP-1150, P58SS3 (1 case)
PT34K03	3/4" Strapping, HD	EP-3100, EP-1250-34, EP-1150, P34SS3 (1 case)



**P12K02**  
1/2" Strapping,  
Economy



**PT12K03**  
1/2" Strapping,  
HD

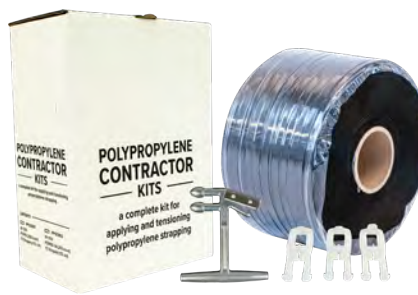
# Polypropylene

Economy & HD & Contractor

PART #	TYPE	CONTENTS
PP12K02	1/2" Strapping, Economy	EP-3080, EP-1200-12, EP-1100, P12S02 (1 case)
PP58K02	5/8" Strapping, Economy	EP-3080, EP-1200-58, EP-1100, P58S02 (1 case)
PP34K02	3/4" Strapping, Economy	EP-3080, EP-1200-34, EP-1100, P34S02 (1 case)
PP12K03	1/2" Strapping, HD	EP-3080, EP-1225-12, EP-1150, P12S02 (1 case)
PP58K03	5/8" Strapping, HD	EP-3080, EP-1225-58, EP-1150, P58S02 (1 case)
PP34K03	3/4" Strapping, HD	EP-3080, EP-1225-34, EP-1150, P34S02 (1 case)
PP12CB01-PB	1/2" Strapping, Contractor, Plastic Buckles	EP-1330, MPPC12-3000, P12PB2 (250 count), corrugated box
PP12CB01-WB	1/2" Strapping, Contractor, Wire Buckles	EP-1330, MPPC12-3000, P12WB2-GA (250 count), corrugated box
PP12CB02	1/2" Strapping, Contractor Economy	EP-1100, MPPC12-3000, P12WB2-GA (250 count), corrugated box
PP12CB03	1/2" Strapping, Contractor HD	EP-3080, EP-1100, EP-1200-12, MPPC12-3000, P12S02 (1 case), corrugated box



**PP12K02**  
1/2" Strapping,  
Economy



**PP12CB01-PB**  
1/2" Strapping,  
Contractor, Plastic Buckles

# Woven Polyester

Economy & HD

*specify Disk Insert Option for Core ID when ordering*

PART #	TYPE	CONTENTS
CS12K02	1/2" Strapping, Economy	EP-3008 (Disk Insert Options for Core ID: 1", 3", 6" or 8"), EP-1140, P12WB2-PH (1 case)
CS58K02	5/8" Strapping, Economy	EP-3008 (Disk Insert Options for Core ID: 1", 3", 6" or 8"), EP-1140, P58WB3-PH (1 case)
CS34K02	3/4" Strapping, Economy	EP-3008 (Disk Insert Options for Core ID: 1", 3", 6" or 8"), EP-1140, P34WB3-PH (1 case)
CS12K03	1/2" Strapping, HD	EP-3045 (Disk Insert Options for Core ID: 1", 1 1/2", 3", 6", or 8"), EP-1160, P12WB3-PH (1 case)
CS58K03	5/8" Strapping, HD	EP-3045 (Disk Insert Options for Core ID: 1", 1 1/2", 3", 6", or 8"), EP-1160, P58WB3-PH (1 case)
CS34K03	3/4" Strapping, HD	EP-3045 (Disk Insert Options for Core ID: 1", 1 1/2", 3", 6", or 8"), EP-1160, P34WB3-PH (1 case)



**CS12K02**  
1/2" Strapping,  
Economy



**CS12K03**  
1/2" Strapping,  
HD

# STRAPPING & MORE

## STRAPPING MINI COILS



PART #	TYPE	SIZE (INCHES)	LENGTH (FEET)	CORE ID (INCHES)	COLOR
MPPC12-3000	Polypropylene	1/2 x .023	3000	8	Black
MPPC12-7200	Polypropylene	1/2 x .023	7200	8	White
SMC12020-300	Steel	1/2 x .020	300	Coreless	Black
SMC34020-300	Steel	3/4 x .020	300	Coreless	Black
MPET12023-1600	Polyester	1/2 x .023	1600	8	Green
MPET58035-1200	Polyester	5/8 x .035	1200	8	Green

## PRE-CUTS



PART #	DESCRIPTION	QTY	WEIGHT (PER CASE)
P12PC2-BK	1/2"x 17' Black	500/case	32 lbs
P12PC2-BL	1/2"x 17' Blue	500/case	32 lbs
P12PC2-GN	1/2"x 17' Green	500/case	32 lbs
P12PC2-OG	1/2"x 17' Orange	500/case	32 lbs
P12PC2-RD	1/2"x 17' Red	500/case	32 lbs
P12PC2-YW	1/2"x 17' Yellow	500/case	32 lbs
P12PC2-WT	1/2"x 17' White	500/case	32 lbs



## EDGE PROTECTORS



PART #	DESCRIPTION	FOR	WEIGHT (PER CASE)	QTY (PER CASE)
EP-5620	1 3/4 x 1" Black Poly	up to 3/4" strap	10 lbs	1000
EP-5620-HD	1 7/8" x 1" White Poly	up to 3/4" strap	10 lbs	1000
EP-5630	2 1/8 x 1 1/2" Black Poly	up to 1 1/2" strap		4000
EP-5640	2 1/4 x 1 5/8" Black Poly	up to 1 1/2" strap	24 lbs	1000
EP-5640-HD	2 1/2 x 1 3/4" Black Poly	up to 1 1/2" strap	25 lbs	1000
EP-5660	2 1/2 x 2" White Poly	up to 1 1/4" strap	31 lbs	1000
EP-5670	4" Jumbo	Lashing		10
EP-5671	5" Jumbo with Slot	Lashing		32
EP-5672-HD	Super Lashing Edge	Lashing		12
EP-5675	4 x 4 x 12"	Lashing		10
EP-5680-10	8 x 8 x 10" Jumbo	Lashing		10
EP-5680-24	8 x 8 x 24" Jumbo	Lashing		1
EP-5680-36	8 x 8 x 36" Jumbo	Lashing		1
EP-5680-48	8 x 8 x 48" Jumbo	Lashing		1
EP-5690	8" Tarp Guard	Tarp		10

# RUBBER & PALLET BANDS

## STANDARD

PART #	DESCRIPTION (CIRC X WIDE)	QTY (PER LBS)
EP-4008	7/8 x 1/16"	6000
EP-4010	1 ¼ x 1/16"	5000
EP-4012	1 ¾ x 1/16"	2300
EP-4014	2 x 1/16"	2300
EP-4016	2 ½ x 1/16"	1670
EP-4018	3 x 1/16"	1480
EP-4019	3 ½ x 1/16"	1220
EP-4030	2 x 1/8"	1150
EP-4031	2 ½ x 1/8"	900
EP-4032	3 x 1/8"	740
EP-4033	3 ½ x 1/8"	630
EP-4057	1 ¾ x 1/8"	750
EP-4062	2 ½ x 1/4"	375
EP-4064	3 ½ x 1/4" (postal)	310
EP-4082	2 ½ x 1/2"	230
EP-4084	3 ½ x 1/2"	155
EP-4094	3 ½ x 3/4"	100
EP-4105	5 x 5/8"	280
EP-4107	7 x 5/8"	40
EP-4117B	7 x 1/8"	200
EP-4128	8 x 1/8"	160



EP-4008, Standard Rubber Band



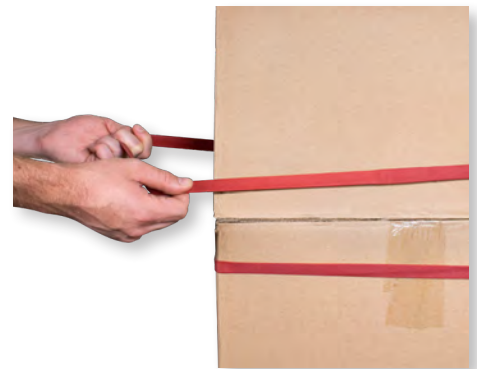
EP-4062, Standard Rubber Band



EP-4214, Large Rubber Band

## LARGE

PART #	DESCRIPTION (CIRC X WIDE)	QTY (PER LBS)
EP-4212	12 x 1/4"	55
EP-4214	14 x 1/4"	45
EP-4217	17 x 1/4"	35



## PALLET

PART #	DESCRIPTION (CIRC X WIDE)	FOR	QTY (APPROX.)	(MASTER)
EP-5034	34 x 1"	Bundling	12	144
EP-5056	56 x 3/4"	30 x 24" Pallet	12	144
EP-5072	72 x 3/4"	36 x 36" Pallet	12	144
EP-5084	84 x 3/4"	36-40 x 48" Pallet	12	144
EP-5092	92 x 3/4"	48 x 48" Pallet	12	144
EP-5292	92 x 7/8" (ribbed)	48 x 48" Pallet	12	144
EP-5472	72" x 1 ½"	36-40 x 48" Pallet	10	100
EP-5484	84 x 1 ¾"	36-40 x 48" Pallet	10	100
EP-5492	92 x 1 ½" HD	36-40 x 48" Pallet	10	100



EP-5084, Pallet Band



EP-5092, Pallet Band



EP-5484, Pallet Band

# UTILITY KNIVES & MORE



## EP-100

*Retractable Thin Snap-Off Knife*

- Steel track
- Built-in blade breaker
- 60 per case



## EP-110

*Retractable SD Snap-Off Knife*

- Built-in blade breaker
- Durable plastic handle
- 60 per case



## EP-120

*Retractable Translucent Knife*

- Lightweight
- High visibility - see through body
- 50 per case
- (Includes blue, pink, green, & orange)



## EP-140

*Retractable HD Snap-Off Knife*

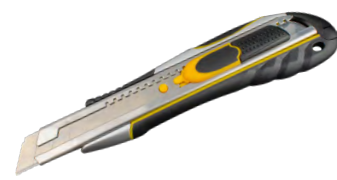
- Durable steel track
- Built-in blade breaker
- Ergonomic anti-slip grip
- 24 per case



## EP-150

*SD Thin Snap-Off Safety Knife*

- Retractable & self-retracting
- Durable steel track
- Built-in blade breaker
- Ergonomic rubber grip
- 12 per case



## EP-160

*HD Snap-Off Safety Knife*

- Retractable & self-retracting
- Durable steel track
- Built-in blade breaker
- Ergonomic rubber grip
- 12 per case



## EP-180

*Retractable Extra HD Snap-Off Knife*

- Built-in blade breaker
- Ergonomic soft rubber grip
- 24 per case



## EP-190

*Retractable Knife with Scoring Wheel*

- HD metal body
- Wheel scores & resizes boxes easily
- 12 per case



## EP-200

*Retractable Classic Design*

- HD metal body
- 12 per case



## EP-210

*Retractable Steel Knife with Rubber Casing*

- Cuts cartons, film, & string
- Soft-touch grip
- 12 per case



## EP-212

*T-Style Economy Lightweight Cutter*

- Ergonomic handle
- 10 per case



## EP-214

*T-Style Cutter*

- Medium-duty
- Robust design
- 10 per case



## EP-215

*T-Style Rotary Cutter*

- Protected circular blade
- Ergonomic design
- Magnet plug hole (magnet sold separately)
- 12 per case



## EP-220

*Specialty Cutter - Hook Knife*

- Cuts cartons film, & string
- 36 per case



## EP-222

*Poly, Stretch Film, & Twine Cutter*

- Mountable cutter for stretch film applicators
- 12 per case



## EP-225

*Safety Carton Opener - Hook Knife*

- Metal nose for tape cutting
- Soft-touch grip
- 12 per case





**EP-228**

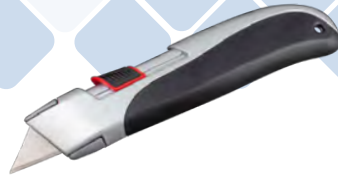
*HD Hook Knife*

HD metal body

Aluminum alloy handle

Soft-touch grip

6 per case



**EP-230**

*HD Self-Retracting Safety Knife*

HD metal body

Self-retracting blade after resistance

Soft-touch grip

12 per case



**EP-235**

*Self-Retracting Knife with Holder*

Self-retracting

Spare Blades: 3 inside handle  
(ceramic blades available by request)

Soft-touch grip

6 per case



**EP-240**

*Retracting Safety Knife*

Steel track

Built-in blade breaker

12 per case



**EP-250**

*Top Actuated Retracting Knife*

Self-retracting

Spare Blades: 5 inside handle

Slide clamp blade change

12 per case



**EP-255**

*Top Actuated Locking Knife*

HD metal body

Spare Blades: 5 inside handle

Soft-touch grip

12 per case



**EP-260**

*Specialty Cutter - Slide Knife*

Glides through bubble, foam, poly, & woven cord

Single button blade change

12 per case



**EP-265**

*Slide Knife*

Glides through bubble, foam, poly, & woven cord

Solid aluminum construction

12 per case



**EP-270**

*Tap Knife*

Convenient tap open & close

Solid metal construction

12 per case



**EP-285**

*Retractable Knife with Knuckle Handle*

Zinc body with protective handle

Spare Blades: 3 inside handle

Soft-touch grip

6 per case



**EP-290**

*Folding Knife*

HD metal body

Single button blade change

12 per case



**EP-295**

*Knife Holder*

Solid plastic construction

Belt clip

1 per case



**EP-297**

*Tool Belt*

Leather pockets

Quick release nylon belt

Accommodates tape guns



**EP-298**

*Hayley Cutter*

Specialty, HD cutter

Ergonomic grip

Use for thicker materials like Ensolite



# TAPE DISPENSERS

specify size when ordering



## EP-600

*Filament Dispenser*

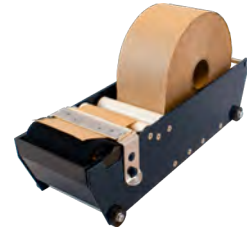
- 1" tape rolls
- Solid steel frame
- 100 per case



## EP-610

*Calm Shell Dispenser*

- 2" tape rolls
- Solid steel frame
- 60 per case



## EP-615

*Manual Kraft Paper Dispenser*

- 3" x 375 yards kraft tape rolls
- Quick pull & tear
- Table-top unit
- 4 per case



## EP-620

*Mousetrap Style Dispenser*

- Size Options: 2", 3" tape rolls
- Quick-snap load
- Blade guard
- Smooth rubber roller
- 24 per case



## EP-635

*Economy Pistol Grip Dispenser*

- Size Options: 2", 3" tape rolls
- Blade guard
- Flexible wiper plate
- Smooth rubber roller
- 40 per case (2") | 24 per case (3")



## EP-675

*Premium Pistol Grip Dispenser*

- Size Options: 2", 3" tape rolls
- Tension control knob
- Blade guard
- Flexible wiper plate
- Smooth rubber roller
- 24 per case (2") | 20 per case (3")



## EP-680

*Deluxe Pistol Grip Dispenser*

- Size Options: 2", 3" tape rolls
- Self-retracting blade
- Soft-touch grip
- Flexible wiper plate
- Smooth rubber roller
- 24 per case (2") | 20 per case (3")



## EP-685

*HD Dispenser*

- Size Options: 2", 3" tape rolls
- Round for snug fit
- Flexible wiper plate
- Smooth rubber roller
- 24 per case (2") | 20 per case (3")



## EP-695

*Streamlined Dispenser*

- Size Options: 2", 3" tape rolls
- Blade guard
- Flexible wiper plate
- Smooth rubber roller
- 24 per case (2") | 12 per case (3")

# REPLACEMENT BLADES



## E100B

SD 13-Point, 9 mm Snap-Off Blades

10 per pack

Compatible with: EP-110, EP-140, EP-160, EP-180



## E110B

SD 8-Point, 18 mm Snap-off Blades

10 per pack

Compatible with: EP-100, EP-150



## E120B

Standard Blade

10 or 100 per pack

Compatible with: EP-120, EP-190, EP-200, EP-210, EP-230, EP-235, EP-250, EP-255, EP-285, EP-290



## E220B

Hook Blade & Main Blade

3 hook & 6 main blades per pack

Compatible with: EP-220, EP-222



## E225-CB

Circle Blade

3 per pack

Compatible with: EP-215, EP-255



## E225-TB

Top Blade

5 per pack

Compatible with: EP-225



## E235B

Ceramic Blade

5 per pack

Compatible with: EP-120, EP-190, EP-200, EP-210, EP-230, EP-235, EP-250, EP-255, EP-285, EP-290

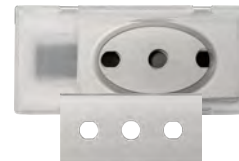


## E240B

Safety Knife Blade

10 or 100 per pack

Compatible with: EP-120, EP-190, EP-200, EP-210, EP-230, EP-240, EP-235, EP-250, EP-255, EP-285, EP-290



## E260B

Slide Knife Blade

10 per pack

Compatible with: EP-260, EP-265



## E270B

Tape Knife, Single Edge Blade

10 or 100 per pack

Compatible with: EP-270

# REPLACEMENT TAPE BLADES & GUARDS



## E610-2B

2" Serrated Blade

10 per case

Compatible with: EP-610-2



## E635-2B

2" Double-Sided Blade

10 per case

Compatible with: EP-635-2



## E675-2B

2" Serrated Blade

15 per case

Compatible with: EP-620-2, EP-675-2, EP-680-2, EP-685-2



## E675-3B

3" Serrated Blade

10 per case

Compatible with: EP-620-3, EP-635-3, EP-675-3, EP-680-3, EP-685-3



## E685-2B

2" Serrated Blade

10 per case

Compatible with: EP-685-2



## E685-3B

3" Serrated Blade

10 per case

Compatible with: TBD



## E695-2B

2" Serrated Blade

10 per case

Compatible with: EP-695-2



## E675-3BG

3" Blade Guard

1 each

Compatible with: EP-620-3, EP-635-3, EP-675-3, EP-695-3

# STORAGE SOLUTIONS & MORE



## EP-5800

Tray Cart

Size Options: Small, Large    Ships as flat pack  
 Solid steel construction    Fits 27 gal totes (not included)  
 Includes 5 inch casters



## EP-5809

Material Shelf Racking Hooks

Solid steel construction  
 Customizable shelving accessory  
 Quick loading system



## EP-5805-L

Ergonomic Power Mobile Cart - Laminate

EP-5805-L (White, laminate cover)    Smooth, swivel casters  
 Easy lift system for adjustable height    Mobile workstation



## EP-5810

Carton Stand

Solid steel construction    Adjustable for different sized boxes  
 Anti-slip wire design    Rubber mounts included (casters sold separately)



## EP-5805-S

Ergonomic Power Mobile Cart - Steel

EP-5805-S (Black, steel cover)    Smooth, swivel casters  
 Easy lift system for adjustable height    Mobile workstation



## EP-5815

Two Story Carton Stand

Solid steel construction    Adjustable for different sized boxes  
 Anti-slip wire design    Rubber mounts included (casters sold separately)



## EP-5825

Corner Board Cutter

Corner Board Range: 2 x 2", 3 x 3", 4 x 4"    Solid steel construction  
 Thickness Range: 0.120 - 0.225"    Safety pin  
 Table mountable

# PACKAGING DISPENSERS



## EP-5820

*Peanut Chute*



Securely attaches to bag

Includes cap

Easily pours loose fill



## EP-5910

*Kraft Paper Dispenser*



Size Options: 12", 15", 18", 24", 36", 48", 60"

Steel construction

Quick load system



## EP-5915

*Paper/Poly Dispenser*



Size Options: 12", 24", 36", 48", 60", 72"    Static roll height

Specify: 2 or 3 tired set up

Casters sold separately

Accommodates multiple rolls

Steel construction



## EP-5920

*Industrial Dispenser*



Size Options: 12", 24", 36", 48", 60"

Use paper, film, & foil

Solid steel construction

Table & wall mountable

Industrial model



## EP-5945

*Sheeter Device*



Size Options: 24"

Use kraft paper, poly sleeves, & stretch film

Slide cutter



## EP-5948-D

*Honeycomb Dispenser - Double*



Core Size: 1-3"

Easily & conveniently dispenses honeycomb

Max Roll Length: 18"

Unique pressure roller system

Max Roll Diameter: 10"

Can also hold tissue paper & more



## EP-5960

*Vertical Paper/Poly Dispenser*



Size Options: 12", 24", 36", 48", 60"

Solid steel construction

Casters sold separately



### EP-5950

*Paper Crumpler*



Size Options: 24", 36"

Solid steel construction

Table (horizontal) & wall mountable

(Wall attachment kit sold separately)



### EP-5955

*Paper Crumpler with Idler System*



Size Options: 15", 24", 36"

Solid steel construction

Idler brake system

Table (horizontal) & wall mountable

(Wall attachment kit sold separately)



### EP-5955-BM-HH

*Paper Crumpler Bench Mount, High*



Size Option: 15"

Feeds from top

Solid steel construction

Idler brake system

Adjustable dispensing height



### EP-5955-BM-LW

*Paper Crumpler Bench Mount, Low*



Size Option: 15"

Feeds from bottom

Solid steel construction

Idler brake system

Adjustable dispensing height



### EP-5956

*Paper Dispenser Table Mount*

Size Options: 15", 24"

Solid steel construction

Compact table top dispensing

Table mount system



### EP-5957

*Center Pull Kraft Paper Dispenser*

Size Option: 15"

Solid steel construction

Center pull dispenser for coreless rolls

Table mount system



### EP-5957-BM

*Center Pull Paper Dispenser, Bench Mount*

Size Options: 15"

Solid steel construction

Center pull dispenser for coreless rolls

Bench mount system



### EP-5957-RS

*Center Pull Kraft Paper Dispenser Roller System*

Size Option: 15"

Solid steel construction

Center pull dispenser for coreless rolls

Roller system with lockable casters



### EP-5957-TT

*Center Pull Kraft Paper Dispenser Table Top System*

Size Option: 15"

Solid steel construction

Center pull dispenser for coreless rolls

Table top system



### EP-5959

*Center Pull Paper Dispenser with Bearings*

Can hold multiple rolls

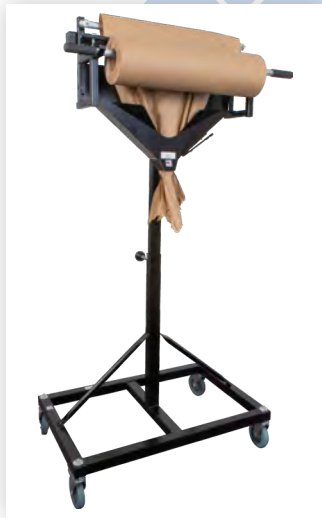
Center pull dispenser for coreless rolls

Bearing roller system

Solid steel construction



specify size when ordering



**EP-5970**  
*Mobile Floor Unit*



**EP-5975**  
*Adjustable Mobile Floor Unit*



Solid steel construction	Height adjustable (telescoping)
Locking casters	Can fit 24" versions of EP-5940 / 5950 / 5955 (Paper units sold separately)

Solid steel construction	Height & angle adjustable
Locking casters	Can fit 24" versions of EP-5940 / 5950 / 5955 (Paper units sold separately)



**EP-5978**  
*Battery Paper Dispenser*



**EP-5980**  
*Power Feed/ Manual Cut System*



**EP-5985**  
*Fully Automated Paper Crumpler*



Solid steel construction	Battery powered
Button & foot pedal operated	Height & angle adjustable
Locking casters	Includes: 1 charger & 2 batteries

Solid steel construction	Foot pedal operated, reverse button, adjustable speed
Height & angle adjustable	Locking casters

Solid steel construction	Touch screen & foot pedal operated
Feeds, dispenses, & cuts to length	Height & angle adjustable
Locking casters	

# MATERIAL DISPENSERS



## EP-6000S

Wall Mount Unit - Single Arm



Size Options: 12", 24", 36"

Solid steel tubing

Includes mounting kit



## EP-6000D

Wall Mount Unit - Double Arm



Size Options: 12", 24", 36"

Solid steel tubing

Includes mounting kit & arm sizes are mixable



## EP-6050S

Wall Mount Unit - Single Arm with Slide Cutter



Size Options: 12", 24", 36"

Slide cutter

Includes mounting kit



## EP-6050D

Wall Mount Unit - Double Arm with Slide Cutter



Size Options: 12", 24", 36"

Slide cutter

Includes mounting kit & arm sizes are mixable



## EP-6220S

Floor Unit - Single Arm



Size Options: 12", 24", 36"

Tear tag

Brake system

Locking casters

Height adjustable (telescoping)



## EP-6220D

Floor Unit - Double Arm



Size Options: 12", 24", 36"

Tear tag

Brake system

Locking casters

Height adjustable (telescoping)

(Arm sizes are mixable)





**EP-6250S**

Floor Unit - Single Arm with Slide Cutter



- Size Options: 12", 24", 36"
- Locking casters
- Slide cutter & brake system
- Height adjustable (telescoping)



**EP-6250D**

Floor Unit - Double Arm with Slide Cutter



- Size Options: 12", 24", 36"
- Locking casters
- Slide cutter & brake system
- Arm sizes are mixable by request
- Height adjustable (telescoping)



**EP-6300**

Economy Floor Unit



- Size Options: 24", 48", 60", 72"
- Use bubble, foam, poly sheets & shrink wrap
- Slide cutter & wire brake
- Gravity feed unit
- Locking casters



**EP-6420**

Floor Unit - Single Arm



- Size Options: 36", 48", 60", 72"
- Single arm brake system (Arm stabilizer come standard for all sizes)
- Tear tag
- Locking casters



**EP-6450**

Floor Unit



- Size Options: 36", 48", 60", 72"
- Single arm brake system (Arm stabilizer come standard for all sizes)
- Slide cutter
- Locking casters

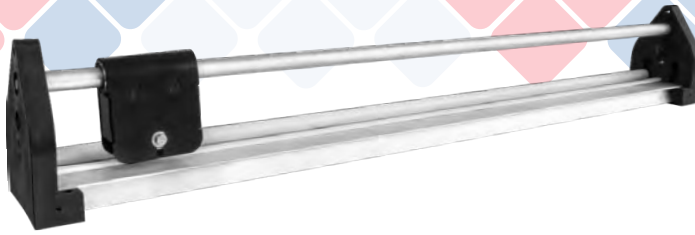


**EP-6455**

Bi-Support Roll Stand



- Size Options: 24", 36", 48", 60", 72", 84", 96"
- Use bubble, foam, & poly
- Height adjustable
- Locking casters
- (Additional roll mounts sold separately)



## EP-6460

Premium Manual Cutter



Size Options: 12", 24", 36", 48", 60", 72", 84"

Robust rotary cutter system

Table top unit



## EP-6470

Automatic Slide Cutter

BATTERY TOOL



Size Options: 24", 36", 48"

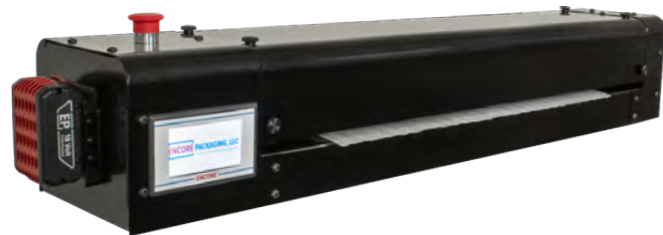
Robust rotary cutter system

Battery powered cutter

Manual load & pull

Easy load system

Includes: 1 charger & 2 batteries



## EP-6480

Automatic Sheet Cutter

BATTERY TOOL



Size Options: 24", 36", 48"

Touch screen operated

Battery powered cutter

Easy load system

Feeds, dispenses, & cuts to length

Includes: 1 charger & 2 batteries



## EP-6465

Bi-Support Stand with Premium Manual Cutter



Size Options: 24", 36", 48", 60", 72", 84"

Robust rotary cutter system

Solid steel construction

Locking casters



## EP-6475

Bi-Support Stand with Automatic Slide Cutter

BATTERY TOOL



Size Options: 24", 36", 48"

Use bubble, foam, poly, & paper

Battery powered cutter

Locking casters

Robust rotary cutter system

Includes: 1 charger & 2 batteries



## EP-6485

Bi-Support Stand with Automatic Sheet Cutter

BATTERY TOOL



Size Options: 24", 36", 48"

Use bubble, foam, poly, & paper

Touch screen operated

Feeds, dispenses, & cuts to length

Battery powered cutter

Locking casters

Easy load system

Includes: 1 charger & 2 batteries



### EP-6500

Roll Stand



Size Options: 24", 36", 48", 60", 72", 84", 96"

Use kraft paper, poly, & shrink wrap

Solid steel construction

Locking casters



### EP-6540

Single Face / Foam Dispenser



Size Options: 24", 36", 48", 60", 72"

Specify: 25 or 36" bottom dispensing disk

Use corrugated, foam, poly rolls

All sizes come with 3.50" risers & casters



### EP-6550

Single Face Corrugated Dispenser



Size Options: 24", 36", 48", 60", 72"

Specify: 25 or 36" bottom dispensing disk

Use corrugated, foam, poly rolls

Slide cutter & brake mechanism

Sizes 24 - 48" come with 12" risers & casters

Sizes 60 - 72" come with casters only



### EP-6560

Single Face/Foam Dispenser with Premium Manual Cutter



Size Options: 24", 36", 48", 60", 72"

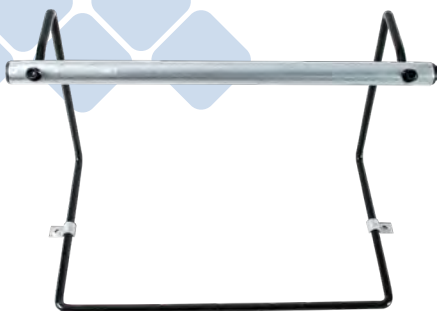
Specify: 25 or 36" bottom dispensing disk

Use corrugated, foam, poly rolls

Robust rotary cutter system & brake mechanism

All sizes come with casters only

# POLY TUBING & BAG DISPENSERS



## EP-720

*Poly Tubing Dispenser*



Size Options: 6", 12", 24", 36"

Classic, simple design

Use poly tubing rolls



## EP-725

*Poly Tubing Dispenser with Slide Cutter*



Size Options: 6", 12", 24", 36"  
(Larger sizes available by request)

Classic design

Use poly tubing rolls



## EP-730

*HD Table-Top Poly Tubing Dispenser*



Size Options: 6", 12", 24", 36", 48", 60", 72", 84", 96"  
(Larger sizes available by request)

Classic design

Use poly tubing rolls



## EP-740

*Mobile Perforated Bag Dispenser*



Size Options: 12", 24"

Use large poly bags

Height adjustable (telescoping)

Brake mechanism

Locking casters



## EP-742

*Economy Poly Bag/Tubing Stand*



Size Options: 36", 48"

Solid steel construction

Easy loading system

Floor & bench mountable

Casters available separately



## EP-745

*Poly Tubing, Kraft Paper, & Stretch Film Dispenser*



Size Options: 12-18", 18-28",  
24-36", 36-48", 48-60", 60-72", 72-84"

Core ID: 3"  
(Other sizes available by request)

HD steel frame

Use kraft, foil, & poly

Height adjustable (telescoping)

Table mountable

Casters available separately



## EP-750

*Poly Tubing Tape Sealer*

3" with razor cutting enclosure

Steel & plastic construction

Sliding tape mechanism



# STRETCH FILM DISPENSERS



## EP-760

Hand Film Dispenser



Film Roll Range: 3 - 5"

Core ID Options: 2" or 3"

Economic hand dispenser

Ergonomic pistol handle



## EP-760-1 S/L

Hand Film Dispenser - Short/Long



Film Roll Options: 3" (short) or 5" (long)

Core ID: 1 1/2"

Tension adjustable

Ergonomic pistol handle



## EP-762

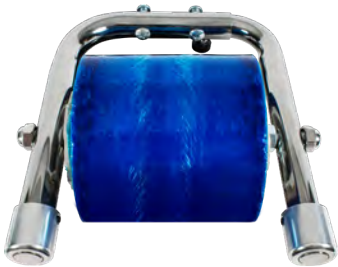
C-Clamp Holder



Solid steel construction

Wall mountable

Keep your hand film dispensers organized and off the floor



## EP-765

Hand Bundling Dispenser



Film Roll Range: 3" & 5"

Core ID: 3"

Tension adjustable

Magnetic attachment



## EP-768

Bundling Table Top Attachment



Table mountable box wrapping station

Robust steel tubing design

Retractable arms

Ability to add 3rd arm for larger sizes



## EP-769

Kraft Paper Table Top Attachment



Size Options: 18", 24", or 36"  
(Larger sizes available by request)

Table mountable

Robust steel design

Can use anything on a roll



## EP-770

U-Hook Stretch Film Holder



3 super-strength magnets

Solid steel construction

Attachable to any metal surface



## EP-772

Tower Film Holder



Solid steel construction

Wall mountable



## EP-780

Hand Inserts

Core ID: 3"

Built-in brake

Comfort grip

Ears feature for roll stability



## EP-780-LITE

Hand Inserts Lite Economy

Core ID: 3"

Lightweight

Intuitive design



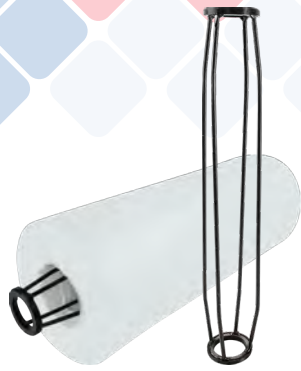
## EP-1330

T-Puller for Polypropylene/Stretch Film

Zinc alloy steel

Use film or polypropylene strapping

Steel blade for cutting



### EP-785

Core for Coreless Film

Core ID Options: 2" or 3"

Size Options: 13", 15", 18", 20"

Solid steel construction

Pairable with most Encore Packaging film applicators



### EP-786

Core for Coreless Film with Handles

Core ID Options: 2" or 3"

Size Options: 13", 15", 18", 20"

Solid steel construction

Ergonomic handles



### EP-787

Core for Coreless Film with Dispenser

Core ID Options: 2" or 3"

Size Options: 13", 15", 18", 20"

Solid steel construction

Base stabilizer



### EP-788

Wrapstik Economy

Handle Length: 38 1/2"

Accommodates all core sizes

High & low reach

Lightweight

Unit comes with basic support handle



### EP-790

Wrapstik

Handle Length: 35 1/2"

Accommodates all core sizes

High & low reach

Tension adjustable



### EP-790-XL

Wrapstik XL

Handle Length: 48 1/2"

Accommodates all core sizes

High & low reach

Tension adjustable



### EP-795

Vertical Pallet Wrapper

Film Roll Range: 40 - 72"

Core ID: 3"

Easy and smooth dispensing

Height & tension adjustable

5 locking casters



specify size when ordering



**EP-800**  
*Pistol Grip*



Core ID: 2 - 3"

Film Roll Range: 12 - 20"

Roller bearing design for tension control

Base stabilizer



**EP-810**  
*Pistol Grip with T-Handle*



Core ID: 2 - 3"

Film Roll Range: 12 - 20"

Roller bearing design for tension control

Base stabilizer



**EP-820**  
*Ball Grip*



Core ID: 2 - 3"

Film Roll Range: 12 - 20"

Roller bearing design for tension control

Base stabilizer



**EP-830**  
*Lightweight Dispenser for Pre-Stretch*



Core ID: 1 1/2", 2", and 3"

Size Options: 13 - 15" or 16 - 20"

Use pre-stretch film

Quick connect feature

Includes magnet attachment



**EP-835**  
*Lightweight Dispenser*



Core ID Options: 2 or 3"

Film Roll Range: 15 - 18"

Tension adjustable for non-pre-stretch film

Quick connect feature

Includes magnet attachment



**EP-838**  
*Economy Magnetic Dispenser*



Core ID: 1 1/2", 2", and 3"

Size Options: 15", 18", or 20"

Tension adjustable

Includes magnet attachment



**EP-838-BS**  
*Bidirectional Roller Ultimate Stretch*



Core ID: 2 - 3"

Size Options: 15", 18", or 20"

Geared device for stretching

Includes magnet attachment



**EP-838-DX**  
*Magnetic Dispenser Deluxe*



Core ID: 1 1/2", 2", and 3"

Size Options: 15", 18", or 20"

Quick release for easy load

Includes magnets and removable stand



**EP-840**  
*Ultra Stretch*



Core ID: 2 - 3"

Film Roll Range: 12 - 20"

Use pre-stretch or thin gauge cast film

Maximizes stretch of film



**EP-860**  
*Bubbleator*



Core ID: 2 - 3"

Film Roll Range: 12 - 20"

Use regular cast film

Creates pockets of pre-stretch



**EP-880**  
*Stringer Device*



Core ID: 2 - 3"

Film Roll Range: 12 - 20"

Use pre-stretch film

Creates aerating strips of film



**EP-890**  
*Roper Device*



Core ID: 2 - 3"

Film Roll Range: 12 - 20"

Use pre-stretch film

Film & rope adjustable

# STRETCH FILM ACCESSORIES



## EP-3600

Roper Strapping Cart



Manually converts pre-stretch film into strong strapping

Easy load system

Use pre-stretch film

Holds 1 roll at a time

Manual pull system

10" rubber tires



## EP-705

Pallet Jack Tray



4 super-strength magnets

Solid steel construction

Attachable to any metal surface



## EP-710

Forklift Tray - Magnetic Box, Small



4 super-strength magnets

Solid steel construction

Attachable to any metal surface



## EP-715

Forklift Tray - Magnetic Box, Large



4 super-strength magnets

Solid steel construction

Attachable to any metal surface



## R34PC3

Poly Alligator Clip



Standard gauge

Securely ties stretch strapping

Reusable

Easy load system

1000 per case



## CS-4420

Corner Spike



Helps quickly secure loads

Unique tie off system

Threader available in each case

24 per case



## CS-4460-ECO

Corner Spike - Bio-Degradable Plastic



Helps quickly secure loads

Unique tie off system

Threader available in each case

24 per case



## DT-750

Devil's Tail - Small



Helps quickly secure loads

Unique tie off system

Reusable

25 per case

## DT-760

Devil's Tail - Large



Helps quickly secure loads

Unique tie off system

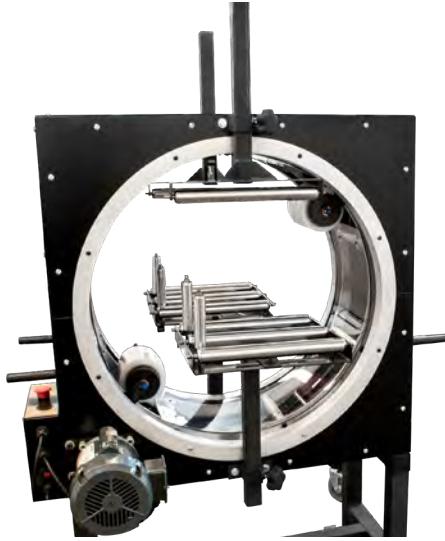
Reusable

25 per case





# ORBITAL WRAPPERS



## EP-6700-25

*Motorized Ring Wrapper - 25"*

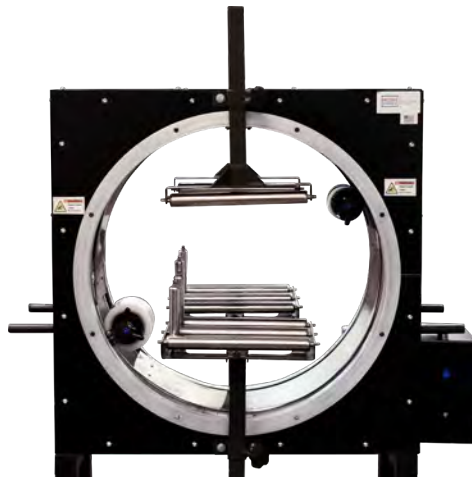
Max Box Size: 13 x 13"

Efficient & easy multi-layer package protection

Use 3" & 5" film rolls

Includes: foot pedal operation

(V-shaped rollers available by request)



## EP-6700-25-DX

*Motorized Ring Wrapper - Deluxe - 25"*

Max Box Size: 13 x 13"

Includes deluxe motor with ability to control ring wrapping speed.

Efficient & easy multi-layer package protection

Use 3" & 5" film rolls

Includes: foot pedal operation

(V-shaped rollers available by request)



## EP-6700-25-ST

*Adjustable Support Table*

Solid steel construction

Height adjustable

Conveyor ready

Locking casters

Compatible with: EP-6700-25 and EP-6700-25-DX



## EP-6700-48-DX

*Motorized Ring Wrapper - Deluxe - 48"*

Max Box Size: 24 x 24"

Includes deluxe motor with ability to control ring wrapping speed.

Efficient & easy multi-layer package protection

Holds 12" film rolls, tension adjustable

Includes: foot pedal operation, stand

(V-shaped rollers available by request)



# CUSTOM PROJECTS

**ENCORE PACKAGING, LLC STRIVES TO CATER TO CUSTOMERS' PRODUCT NEEDS BY USING OUR UNIQUE CAPABILITIES TO PROVIDE A ONE-OF-A-KIND SOLUTION.**

Privately labeled products can help brand development, recognition, marketing campaigns, and repeat business. By working together, we can bring to life the solutions you need to meet your customers' needs by creating, adapting, or modifying a packaging product.

Private Labeling is available by request on tape dispensers, utility knives, film dispensers, kraft paper dispensers, and more! Please note that custom size requests for existing products can be provided depending on the product. We can also provide private labeling to our catalogs and product literature.

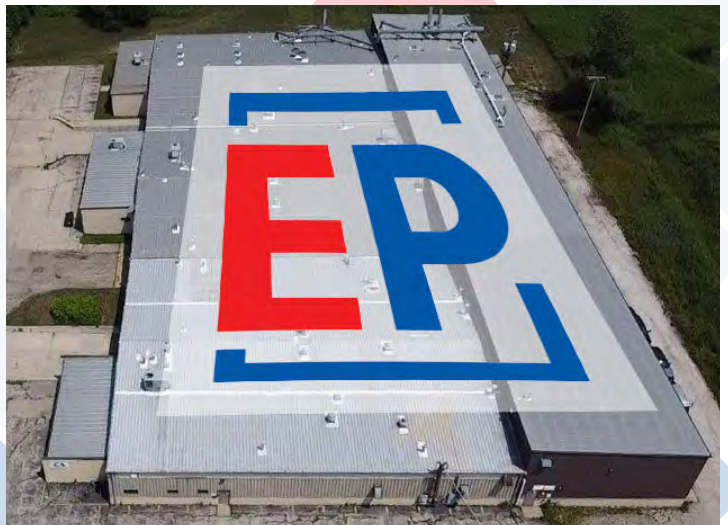
To get started or to learn more information, contact our customer service team:  
**P (847) 735-8105 | [customerservice@encorepack.com](mailto:customerservice@encorepack.com)**



## **SELLING ONLY TO DISTRIBUTORS**

*Terms & Conditions for all transactions, product use, and content relating to Encore Packaging, LLC are listed:  
[www.encorepack.com/terms.html](http://www.encorepack.com/terms.html)*

**DISCLAIMER:** The information contained in this price list is for general information purposes only. The information is provided by Encore Packaging, LLC and whilst we endeavor to keep the information up-to-date and correct, we make no representations or warranties of any kind, express or implied, about the completeness, accuracy, reliability, suitability or availability with respect to the price list or the information, products, services, or related graphics contained on the website for any purpose. Any reliance you place on such information is therefore strictly at your own risk. In no event will we be liable for any loss or damage including without limitation, indirect or consequential loss or damage, or any loss or damage whatsoever arising from loss of data or profits arising out of, or in connection with, the use of our products.



# TABLE OF CONTENTS

- 1 STEEL TENSIONERS**
  - Stainless Steel Tensioners**
- 2 STEEL SEALERS & CUTTERS**
  - Sealless Tensioners**
  - Strap Cutters**
- 3 POLY & CORD TENSIONERS**
- 4 POLY SEALERS**
- 5 BATTERY STRAPPING TOOLS**
- 6 SEALS & BUCKLES**
- 7 STEEL & POLY DISPENSERS**
- 9 MOBILE STRAPPING TRUCKS**
  - Tool Balancers**
- 10 CORD DISPENSERS**
- 11 STRAPPING KITS**
- 13 STRAPPING MINI COILS, PRE-CUTS & EDGE PROTECTORS**
- 14 RUBBER & PALLET BANDS**
- 15 UTILITY KNIVES**
  - Tool Belts**
- 17 TAPE DISPENSERS**
- 18 REPLACEMENT BLADES**
  - Replacement Tape Blades & Guards**
- 19 STORAGE SOLUTIONS**
  - Corner Board Cutter**
- 20 PACKAGING DISPENSERS**
- 23 MATERIAL DISPENSERS**
- 27 POLY TUBING & BAG DISPENSERS**
- 28 STRETCH FILM DISPENSERS**
- 31 STRETCH FILM ACCESSORIES**
- 32 ORBITAL WRAPPERS**
- 33 CUSTOM PROJECTS**

## ***Distribution Central***

*Register on our website to access  
helpful product information:*

- Schematics
- Sell sheets
- Videos (information & instruction)
- Ordering & tracking (coming soon)

*Questions? Contact  
distribution@encorepack.com  
for answers or to help register.*



**MADE IN USA**

**P** (847) 735-8105 | **F** (847) 735-8297  
sales@encorepack.com | www.encorepack.com  
201 Park Avenue, Lake Villa, IL 60046  
P.O. Box 595, Winnetka, IL 60093